

Oswal[®]

Special Quality for
Special People



Our Company is located in Than (Gujarat), is a large-Scale enterprise under modern management system specialized in producing and selling high-class construction ceramics, with many excellent professional staff members. We have been operating advanced manufacturing and it is mighty strength on product design, research & development and technology innovation that make our company enjoy a leading position in this field.

Our company has been awarded ISO 9001:2000 edition international quality system certificate. Through the strickest inspection standard to select raw materials. Our products are examined by the national authorities as the environmental protecting ceramics.

Company Profile

Vision

The company has a vision of becoming one of the most successful Sanitary ware manufacturer and supplier in the present competitive ceramic industry.

Mission

Our mission is to focus on manufacturing in the product which are of best quality as required by the customer.

Goals

continuos improvement of quality in all the manufacturing process. continuos training and education staff every quarterly. Keep The Marketing Channels and Dealers upgrade on the resent changes in the industry.

Production

The Company has well trained and experienced manpower to handle its production. There is an effective control over the whole production cycle achieve quality products. Production department is state of the art with use of all the modem technology like advanced tunnel kiln, modem glazing units and battery casting that is suitable for mass production goods.

Marketing

The Marketing director with his team of channel partners makes it a point to be in the market and feel its pulse, based on the recent changes in the markets and its ongoing trends, feedback for the new design and methods of promotion of the product is achieved by the marketing people. The marketing people gives a positive reports from the industrial influencer. The architects and interior designers to get the latest updates on the ongoing customer preferences.

Quality

Quality at eagle is a three pronged approach focusing on people, Products and Processes. The central principle is to find the cause and eliminate it. This system is very effective in managing quality and moving to a higher level without much loss.

Special quality
For special people

Oswal[®]



Achievement



Oswal is ably led by Mr. Kirit Prajapati, a founder with a broad vision to take the company to new heights of success and

achievement. With more that 20 years of experience in the ceramic field, he is a technical master with business acumen to lead Oswal to success.

As an entrepreneur he has faced numerous challenges that has made him a high performing leader of his team. He always put faith in his people and grooms them to perform at a higher level, consistently upgrading their abilities and skills.

An ardent fan of high quality products, he has since the inception of Oswal focused on systems and processes that enhance quality of products. With the wisdom to understand that systems alone cannot deliver high quality, he trains and shows the way to his people to adopt and habituate themselves in quality thinking and a zero tolerance attitude towards lack of quality.

He has been at the helm of affairs at company and always hands on leading the way for juniors to follow and grow into a force to reckon with in Sanitary ware manufacturing sector.



WATER SAVING

Our WCs have a special bowl structure and are specifically designed to flush with both lower (2.5/4 litre) and typical (3/6 litre) water volumes.

By using less water, these water saving WCs benefit you and the environment. All Home Decor standard height wall-hung frames come with dual flush function as standard in both 2.5/4 litre and 3/6 litre options.



SPACE SAVING

A wall-hung WC takes up less room than a conventional WC, and the concealed installation offers flexibility in confined spaces. The range of compact WCs have shorter projection, saving even more space.

RIM-LESS TECHNOLOGY

Offering effortless cleaning and innovative, hygienic design. Our rimless WC pan eliminates the areas where germs gather and multiply, giving a superior level of hygiene.

WASHBASIN FORMS

Washbasins can be used with a pedestal as well as being wall-hung. Basins suitable for use with a counter top can be fitted in three alternative ways:



FISCHER

A simple, elegant installation system for use with wall-hung WCs. The fixings are hidden from sight by the use of internal ABS sleeves, creating a clean, smooth design.

CHARACTERISTICS



All seats and covers are subjected to a weight test.



All WC pans are subjected to an odor leakage test.



All seats and covers are subjected to an open/close test.



Saves water with only 1 Ltr. of water consumption.



Soft Close Seats & Covers
Soft Closing and silent
Special technology



Requires very little space and provides easy bottom cleaning.



Anti Bacterial Glazed



ECO FRIENDLY MANUFACTURING



Our plants comply with green building norms of the Indian Green Building Council.
Various measures undertaken :



Factory Designing

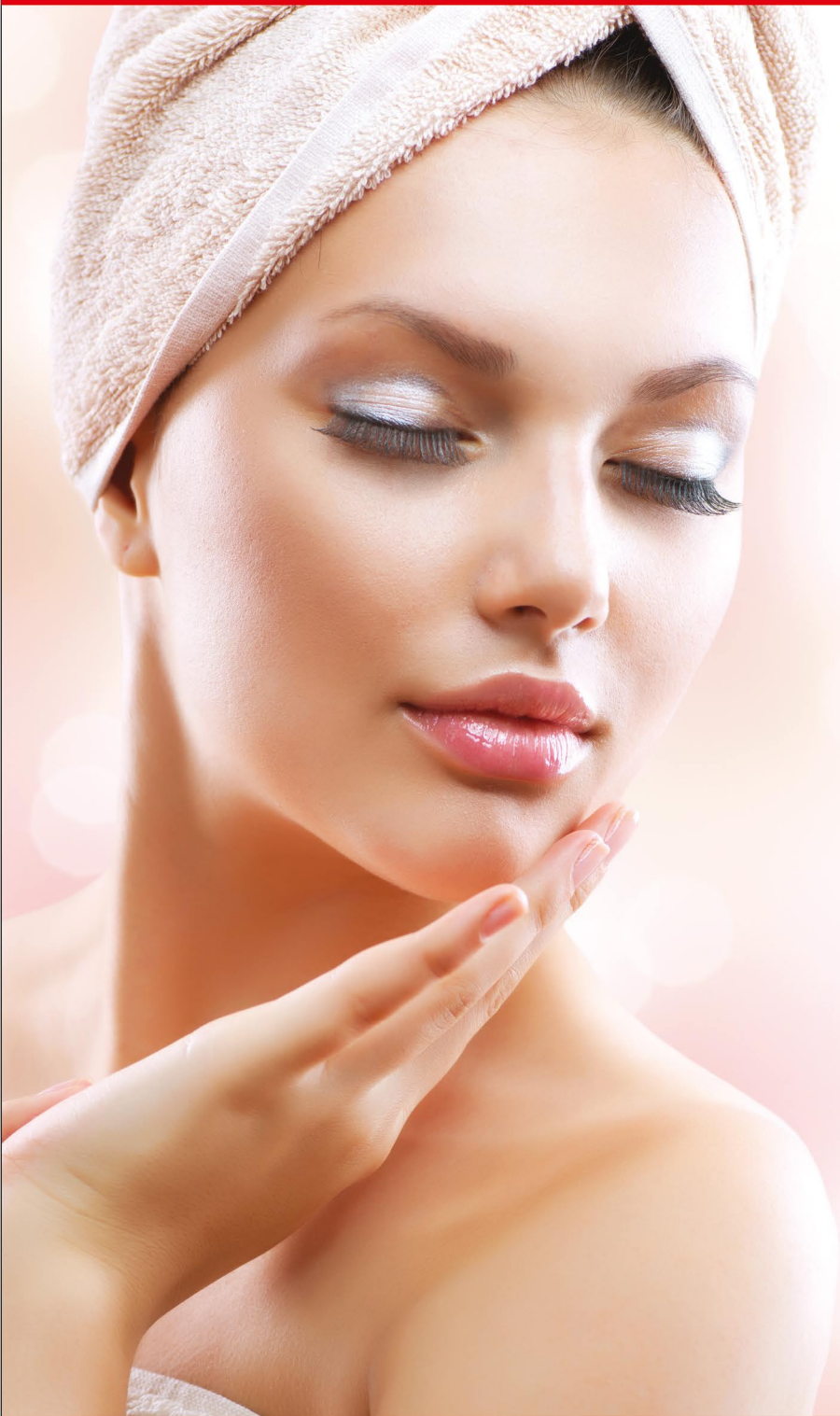


Energy Conservation



Water Conservation

Oswal[®]



PREMIUM
SANITARYWARE COLLECTION

INDEX



08 ONE PIECE CLOSET



22 ONE PIECE BASIN



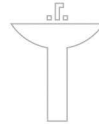
12 WALL HUNG CLOSET



23 WASH BASIN HALF PEDESTAL



14 WATER CLOSET



24 WASH BASIN PEDESTAL



15 TABLE TOP BASIN



29 URINAL & PAN



18 WASH BASIN



31 DESIGNER SERIES



21 COUNTER BASIN



53 ACCESSORIES

One Piece





Silveniya



Solo

S Trap - 4" & 9" | P Trap



Round



Dolphin

S Trap - 4" & 9" | P Trap



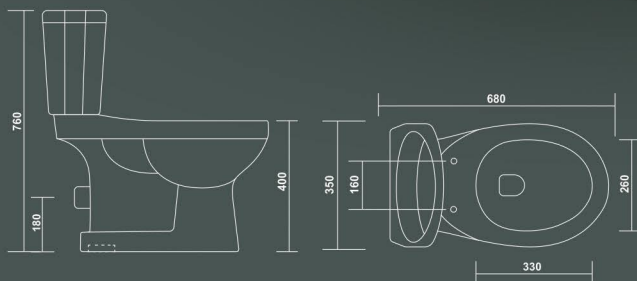
Royal



Glory-Syphonic



Apple



Aqua Set

Wall Hung





Snazy Wallhung



Selvo Wallhung



Lenis Wallhung



Concealed E.W.C. S Trap



Solo-Floor Mounting E.W.C.

S/P Trap



Levis-Floor Mounting E.W.C.

S Trap



E.W.C. P Trap



E.W.C. S Trap



Anglo Indian P Trap



Anglo Indian S Trap

Table Top





Capsule

520x320x120mm



Sanyo

555x415x135mm



Opera

465x465x160mm



Oval

530x400x155mm



Smart

395x395x135mm



Cello

450x330x135mm



Ship

420x340x180mm



Rio

480x375x135mm



Tucson

625x400x125mm



Elite

470x360x135mm

Wash Basin





Viva 18"x14"



Silk 18"x14"



Sweet 14"x11"



Sifone 16"x14"



Suzlon 16"x13"



Cute 18"x9"



Mini Corner 14"x14"



Corner 16"x16"



Big Corner 17"x17"



Roto 18"x14"



Prime 18"x14"



Super 18"x12"



Crownly 18"x13"



Rani 17"x12"



Swan 12"x9"



Simple 20"x16"



Sober 22"x16"



Snazzy 18"x10"



Cabinet

24"x19"



Top Counter Basin



Under Counter Basin



Vanity



Diamond



Toto



Sesa



Lexo



Rio



Chocolate



Morfil

15"x14"



Swift

18"x16"



Spice Half Set

19"x15"



Classic Set

22"x16"

Wash Basin Pedestal





Dolphin Set

21"x18"



Mini Neptune Set

22"x16"



Spenta Set

22"x16"



Sophia Set 22"x16"



Alfa Set 18"x14"



Plazma Set 18"x14"



Serena Set 22"x16"



Simi Set 22"x16"



Latina Set 22"x16"



Diamond Set

25"x18"



Alasca Set

24"x20"



Star Gold Set

22"x17"



Big Sterling Set

25"x18"



Flora Set 22"x16"



Supreme Set 22"x16"



Mini Sterling Set 22"x16"



Sober Set 22"x16"



Classic Set 22"x18"



Scooty Set 19"x13"



Half Stall Urinal



Baby Urinal



Flat Back Urinal



Corner Urinal



Squatting Urinal



Delux Orissa Pan 23"x17"
& 21"x17"



Small Orissa Pan 20"x16"



Self Orissa Pan 20"x16"



C.T. Pan 20"x16"



Orissa Pan 23"x16"



Aqu Pan 21"x16"



Cross 21"x17"



L.L.C. 10 Ltrs.



SINK 24"x18"x10" 24"x18"x8"
20"x14"x6" 18"x12"x6"

Oswal[®]

Designer
Collection



PREMIUM
SANITARYWARE COLLECTION



TD - 101



TD - 102



TD - 103



TD - 104



TD - 105



TD - 106



TD - 107



TD - 108



TD - 109



TD - 110



TD - 111



TD - 112



TD - 113



TD - 114



TD - 115



TD - 116



TD - 117



TD - 201



TD - 202



TD - 203



TD - 204



TD - 205



TD - 206



TD - 207



TD - 208



TD - 209



TD - 301



TD - 302



TD - 303



TD - 304



TD - 305



TD - 306



TD - 307



TD - 308



TD - 309



TD - 310



TD - 311



TD - 401



TD - 402



TD - 403



TD - 404



TD - 501



TD - 502



TD - 503



TD - 504



TD - 505



TD - 506



TD - 601



TD - 602



TD - 603



TD - 604



TD - 605



TD - 701



TD - 702



SV - 101



SV - 102



SV - 103



SV - 104



SV - 105



SV - 106



SV - 107



SV - 108



SV - 109



SV - 110



SV - 111



SV - 112



SV - 113



SV - 114



SV - 115



SV - 116



SV - 117



SV - 118



SV - 119



SV - 120



SV - 201



SV - 202



SV - 203



SV - 204

Designer W.B Pedestal
Vitrossa

Oswal®



SV - 205



SV - 206



LV - 301



LV - 302

AVAILABLE COLORS



LV - 303



LV - 304



LV - 305



701



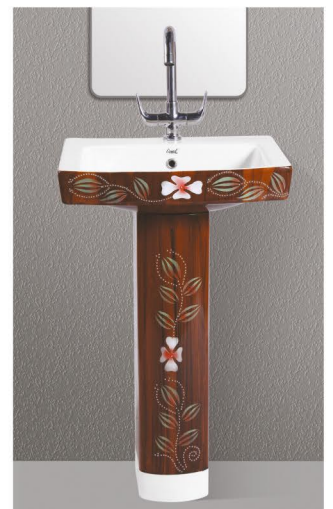
001



002



003



004

Designer W.B Pedestal
Vitrossa

Oswal®



005



006



RV - 101



RV - 102



RV - 103



RV - 104



RV - 105



BV - 401



BV - 402



BV - 403



BV - 404



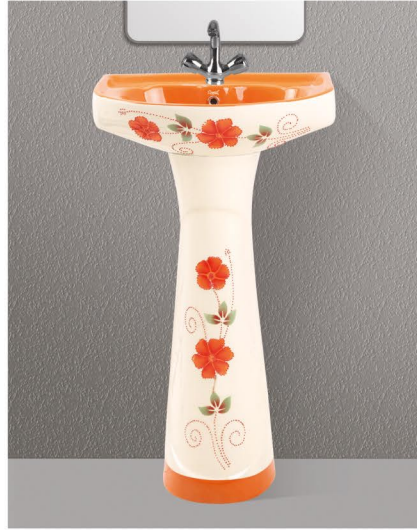
BV - 405

Designer W.B Pedestal
Vitrossa

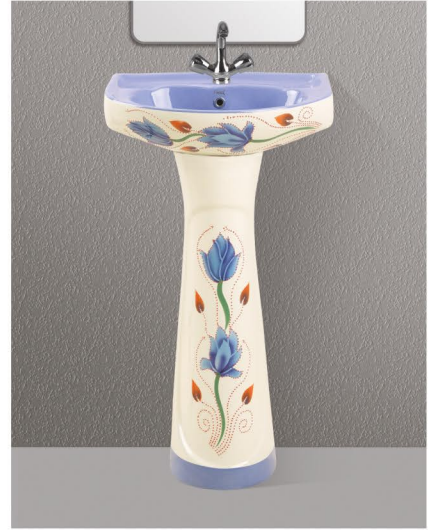
Oswal®



601



602



603



604



605



801



802



R - 01



R - 02



R - 03



SP - 901



SP - 902



SP - 903



SP - 904



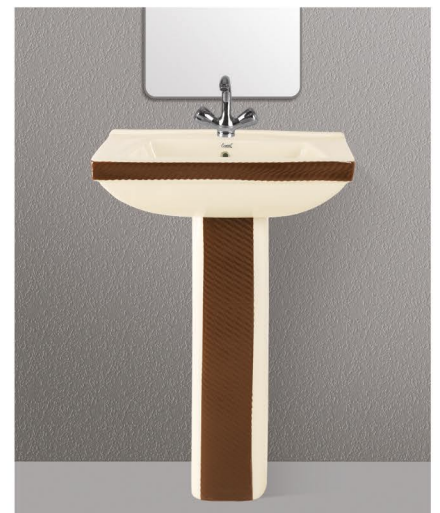
SP - 905



SP - 906



P - 907



P - 908



D - 001



D - 002



D - 003



D - 004



D - 005



D - 006



D - 007



D - 008



D - 009



D - 010



D - 011



D - 012

Designer W.B Pedestal
Dolphin

Oswal®



D - 013



D - 014



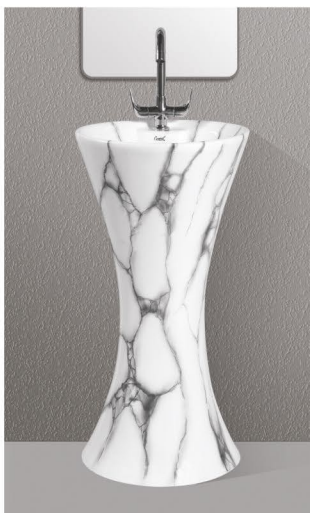
D - 015



D - 016



D - 017



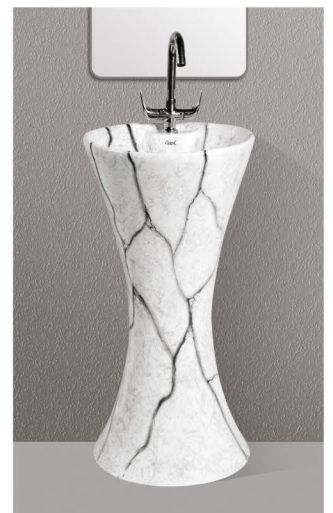
1001



1002



1003



1004



1005



1006



1007



1008



1009



1010



1011



1012



1013



1014



1015



1016



1017



1018



1019



1020



1021



1022



1023



1024



1025



2001



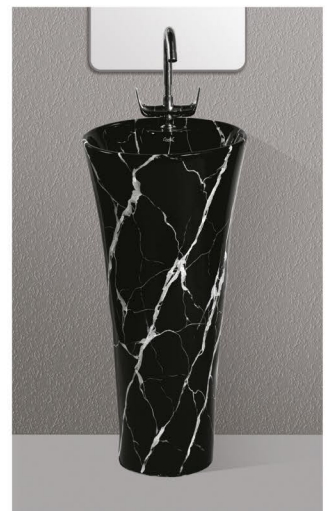
2002



2003



2004



2005



2006



3001



3002

Designer W.B Pedestal
Rustic

Oswal[®]



SR - 4001



SR - 4002



SR - 4003



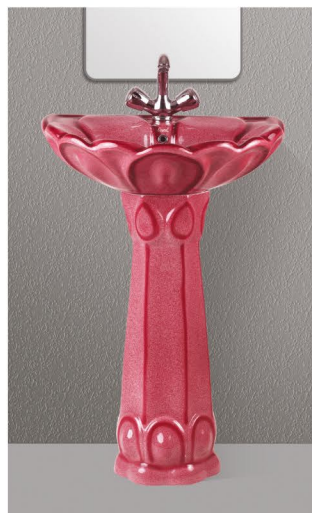
SR - 4004



SR - 4005



SR - 4006



SR - 4007

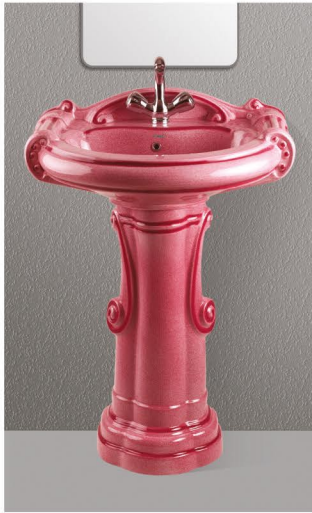


SR - 4008



MR - 4009

Designer W.B. Pedestal
Rustic



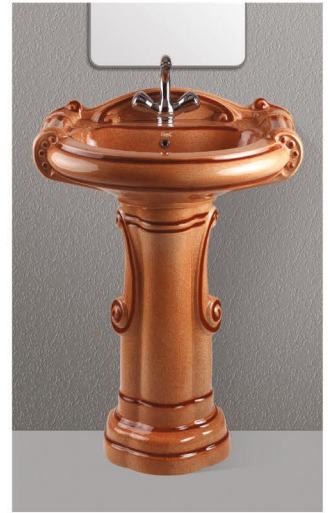
BR - 4010



BR - 4011



BR - 4012



BR - 4013

Water Closet Rustic

Available  
Colour Red Brown Co. Brown



E.W.C. - Sorrento blue



E.W.C. - Magenta



E.W.C. - Black

Wash Basin Rustic



Crowny



Crowny
50



18"x14" Prime

Designer Wash Basin

Rustic



18"x14" Prime



18"x12" Super



18"x12" Super



18"x12" Super

Pan Rustic



Orissa Pan



Orissa Pan



Orissa Pan



Orissa Pan





White

Running Colours



T. Blue



Green



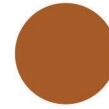
Pink



Ivory



Grey



Red
Brown



Co. Brown

Special Colours



Magenta



Sorrento
Blue



Mint
Green



Aqua
Green



Black

Super Special Colours



Burgundy

Exclusive Colours



Orange



Red

Rustic Colours



Red
Brown



Co. Brown



Magenta



Sorrento
Blue



Black

Note : Above printed colours may be differ from colours of ceramic because of printing limitation.
For true selection please refer to actual sample or shade board.



Anglo Indian Seat Cover



E.W.C. Seat Cover



Seat Cover



PVC Cistern 10 Ltr.



Partition



Foot Rest



One Piece Fitting



Rack Bolt



Jet Sprey



Chennal

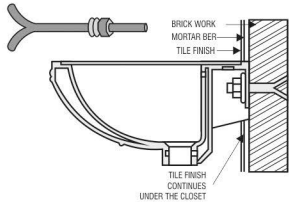


P Trap (Big)

P Trap

P Trap Vent

S Trap



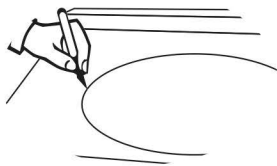
WALL HUNG BASIN

As per shown in the picture, the rag bolt must be grouted into the cement/concrete wall. The bolts must be fixed to the cement/concrete wall. Allow setting & checking than install it using nut and washer.

COUNTER WASHBASIN

At the beginning

1. A skilled or experienced person should install counter lavatories.
2. Avoid using adhesive with this product.
3. Check the waste area and supply tubing if required.
4. Do not open the lavatory from its protective carton until you are ready for installation.
5. Please follow all local building and plumbing codes.



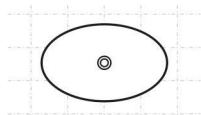
MATERIAL & TOOLS

Measure tape, Keyhole or saber saw, Hammer, Glasses, Rags or Paper toweling, Drill (1/2 dia, drill bit or larger), Pencil, sealant, sharp knife or scissors.

INSTALLTION OF LAVATORY

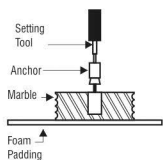
Please Note : Please install it in a way that future removal from underneath the counter top is possible without damaging the counter top.

1. Please check the desired location for clearance between the back splash, faucet, Fixture and cabinet.
2. Please cut the template.
3. Please carefully trace the template on the counter top directed.
4. Please mark the faucet hole centerline on the counter top.
5. Please drill a 1/2" pilot on the inside of the cut line.



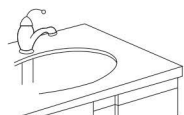
For Wood Counter tops:

1. Mark and per-drill the wood screw holes at the locations shown on the template.
2. Waterproof any exposed areas of wood.



For Marble Counter tops:

1. Position the counter top upside down on foam padding to protect the surface. Mark and drill 3/6" holes 5/8" deep at the locations shown on the template.
2. Use a setting tool and hammer to secure the anchors.



For All Installations:

1. If the counter top has not been installed, install it at this time.
2. Drill the faucet holes according to the faucet installation instructions.
3. Install the faucet to the counter top according to the manufacture's instructions.
4. Install the drain to the lavatory according to the manufacture's instructions.

Maintenance



MAINTENANCE

Like any other part of your house, the bathroom can be made to look great and made to last if it is taken care of regularly. To make your bathroom beautiful here are some invaluable tips.

Wash Basin

A mild detergent can be used to wash the basin at least once a day. After washing, the basin should be wiped out clearly to avoid water stains.

Closets

Cleanser like Harpic can be used to clear the closet with soft plastic brush, at least once a day.

To avoid minute discoloring, after flushing the toilet give it a once over with the soft brush. Keep the toilet brush handy in a convenient stand nearby.

In case of toilets and basins, if there has been no maintenance since long period of time, water deposits and discoloration can form on the surface of areas that get wet. In such cases, these stains / marks can be removed with the help of a solution of dilute hydrochloric acid.

Clean with a soft cotton cloth and warm water with soap.

Do not use thinner, dry cleaning liquids or powder paste. Use a liquid cleaner at least twice a week.

Use Brasso or car rubbing compound and then polish with a cloth to remove fine scratches.

Oswal[®]

OSWAL POTTERY WORKS

E-mail : oswalpotteryworks@yahoo.in
Web : www.oswalpotteryworks.com

Follow us

